

# RobustLink Central Manager

## Centralized M2M Management Platform

for GoRugged R3000 Standard, R3000 Quad, R3000 Lite, M1000 XP Lite, M1000 XP and M1000 Pro V2.

Robustel RobustLink is an industrial-grade centralized management and administration system for Robustel GoRugged R3000 Standard, R3000 Quad, R3000 Lite, M1000 XP Lite, M1000 XP and M1000 Pro V2. It allows you to monitor, configure and manage large numbers of remote devices on a private network over the web.

### Key Features

- Remote Monitoring
- Remote Configuration
- Remote Firmware Upgrade: Immediately/ Plan Upgrade
- Dashboard: Device Status, Device Types, SIM Send/Receive Traffic, Signal Strength
- Alarm via Web/E-mail
- GPS Location on Map
- Data Forwarding
- Number of Devices: 1000+
- Management: Web

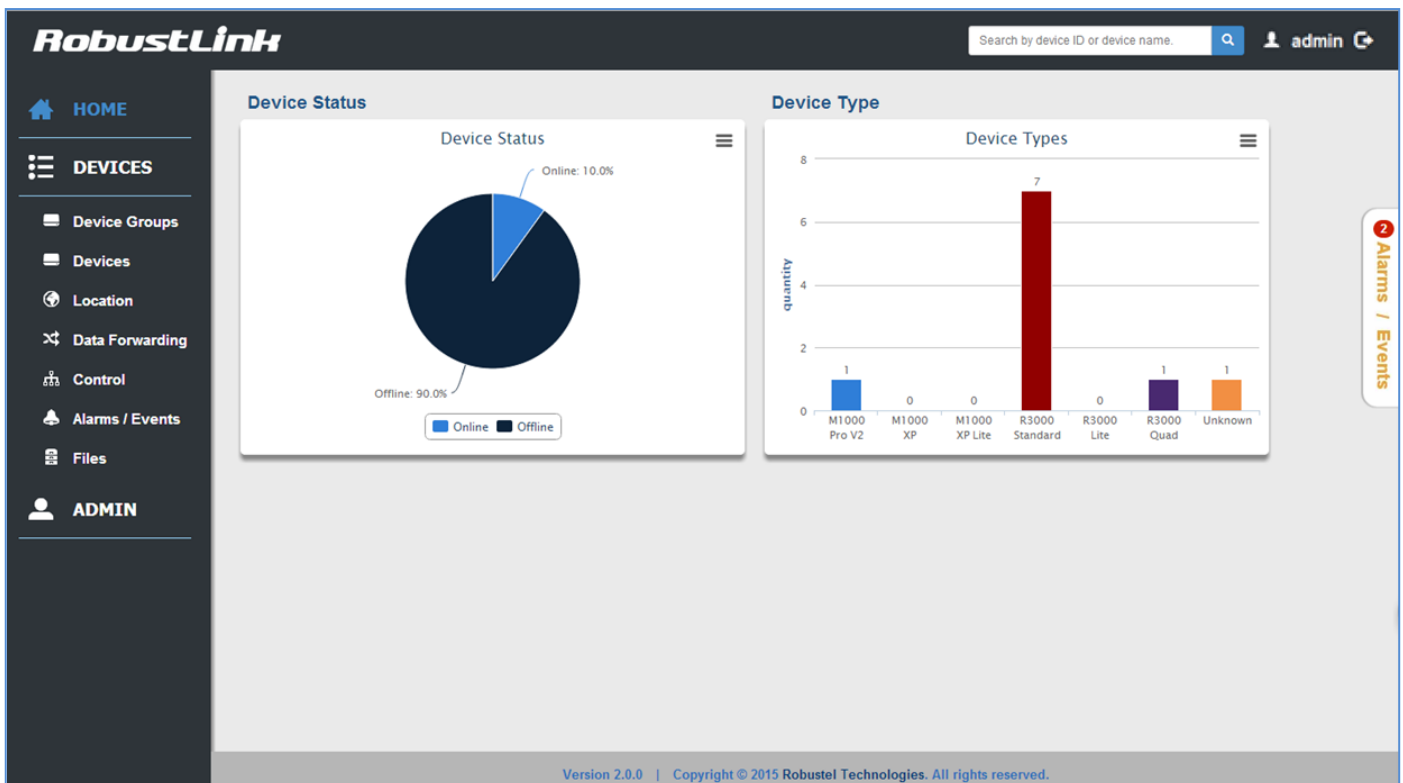
### Hardware Requirements

Your host hardware must meet the following minimum requirements:

- 2 GHz CPU or above
- 2 GB RAM or above
- 500 GB disk space

### Software Requirements

- O/S: Linux CentOS 6.3 or above
- Apache 2.2, PHP 5.3, MySQL 5.1 or above
- Browser: IE 9.0 or above, Chrome, Firefox



Contact:

[www.robustel.com](http://www.robustel.com)

[info@robustel.com](mailto:info@robustel.com)